



# GAT MONTHLY MEMBERSHIP PROGRESS REPORT

Results as of: 10/31/2021

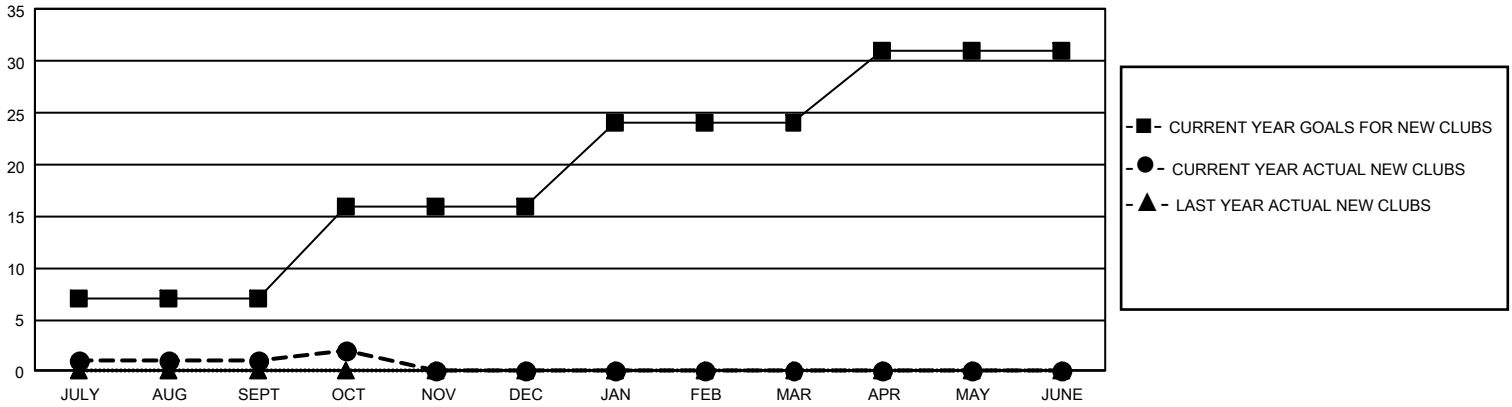
## GMT Constitutional Area 1, Group J

REPORT DOES NOT INCLUDE CLUBS IN UNDISTRICTED AREAS.

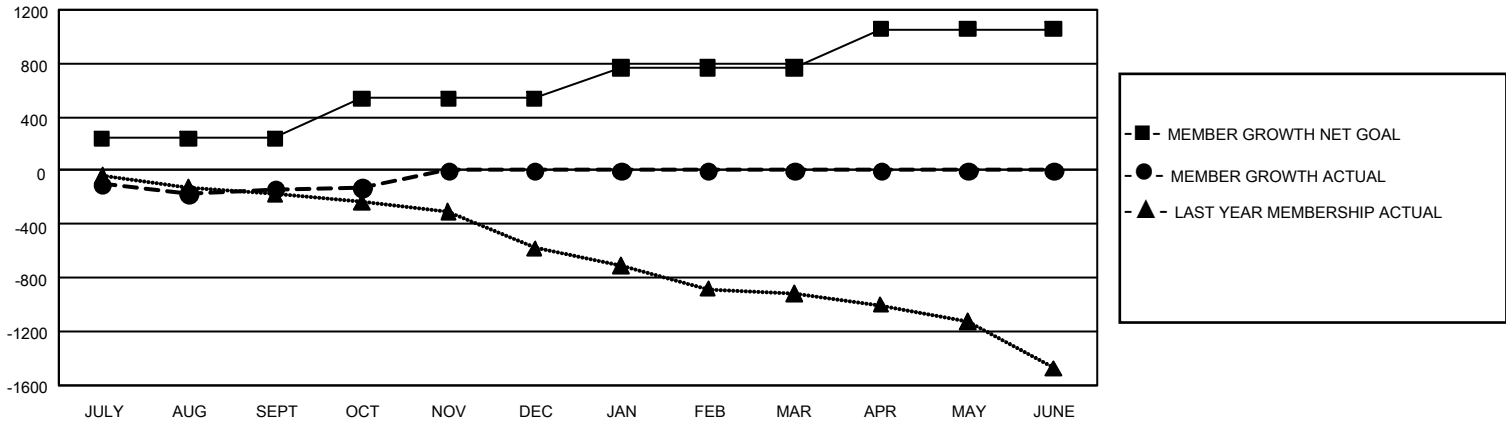
Clubs			
RESULTS FOR 2021-2022			
QUARTER	NEW CLUB GOAL	NEW CLUBS	DROPPED CLUBS
JULY/AUG/SEPT	21	1	10
OCT/NOV/DEC	27	1	5
JAN/FEB/MAR	24	0	0
APR/MAY/JUNE	21	0	0

Members			
RESULTS FOR 2021-2022			
QUARTER	MEMBER GROWTH NET GOAL	MEMBER GROWTH ACTUAL	DROPPED MEMBERS ACTUAL (including transfers)
JULY/AUG/SEPT	241	561	629
OCT/NOV/DEC	297	192	170
JAN/FEB/MAR	231	0	0
APR/MAY/JUNE	287	0	0

GOALS AND ACTUAL NEW CLUBS CUMULATIVE



GOALS AND ACTUAL MEMBERS CUMULATIVE



<b>DROPPED CLUBS: 15</b>  <b>DROPPED MEMBERS</b> DECEASED 118 CLUB CANCELLED 52 OTHER 629 <b>TOTAL 799</b>	290 CLUBS OF 935 ADDED 1 OR MORE NEW MEMBERS	<b>GENDER DISTRIBUTION</b> MALE 15,005 (70.62%) FEMALE 6,241 (29.37%) NON BINARY 1 (0.00%) PREFER NOT TO ANSWER 0 (0.00%)
	<a href="#">CLICK HERE FOR CUMULATIVE MEMBERSHIP DATA</a>	TOTAL FAMILY UNIT MEMBERS 4,119 FAMILY MEMBERS PAYING HALF DUES 2,099